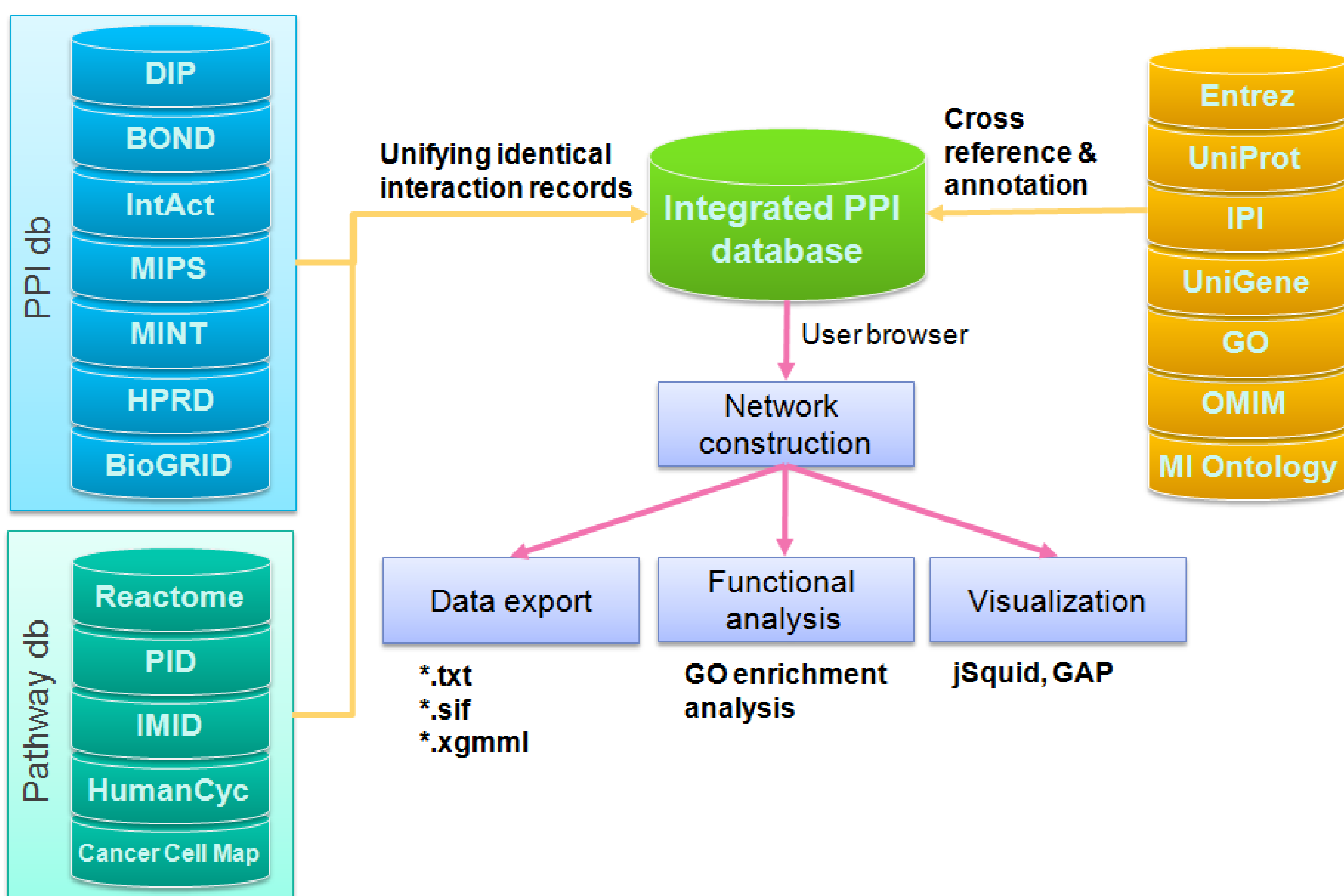
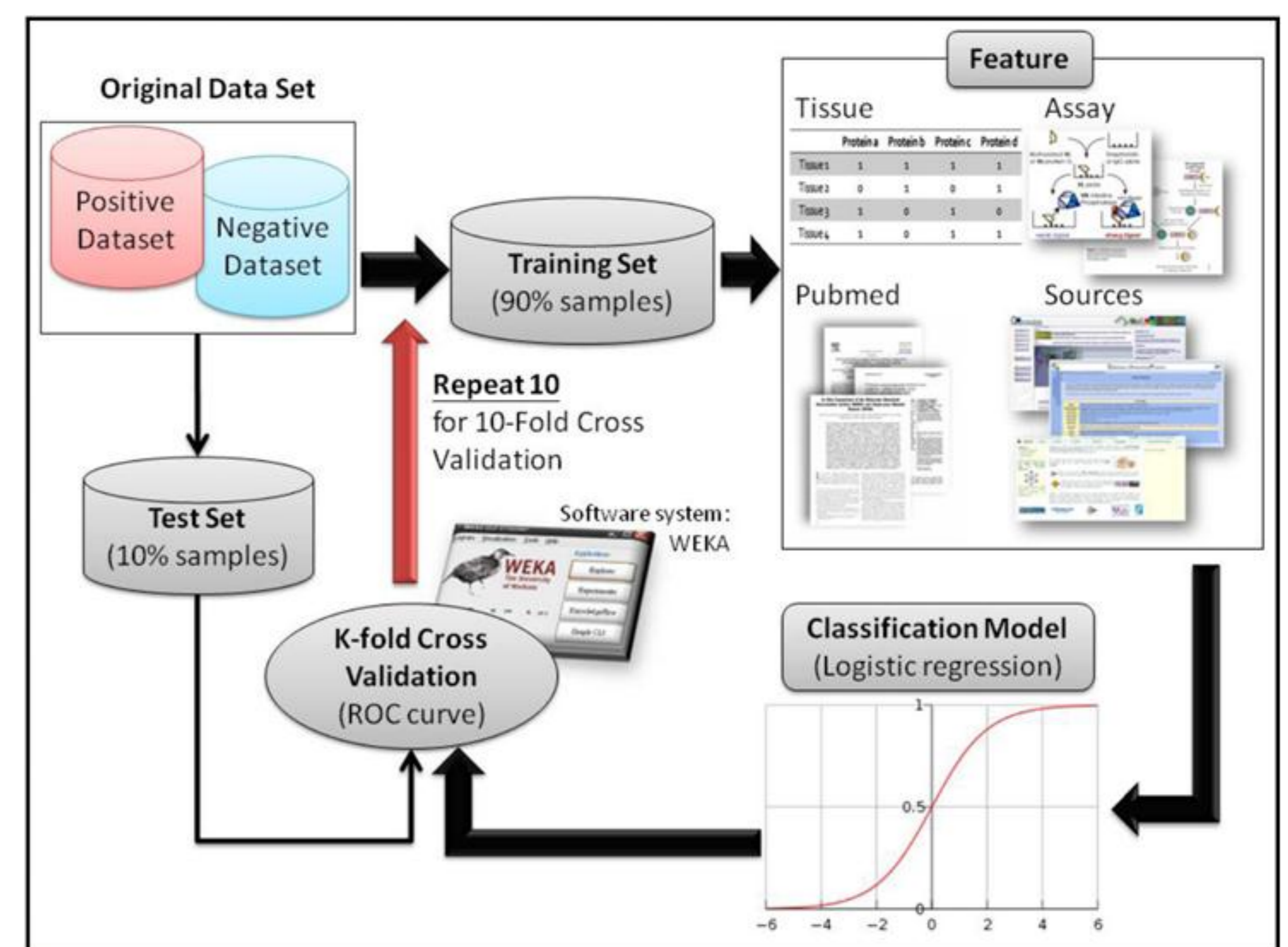


QuasiPro is a value-added protein-protein interaction database. To assess the quality of interactions, QuasiPro assigns a quality score, based on the frequency of curation, experimental types, and co-expression, to each interaction. Additionally, QuasiPro provides several analysis tools to assist user to propose hypothesis from interaction data. QuasiPro is freely available at <http://csb2.ym.edu.tw/quasipro/>.

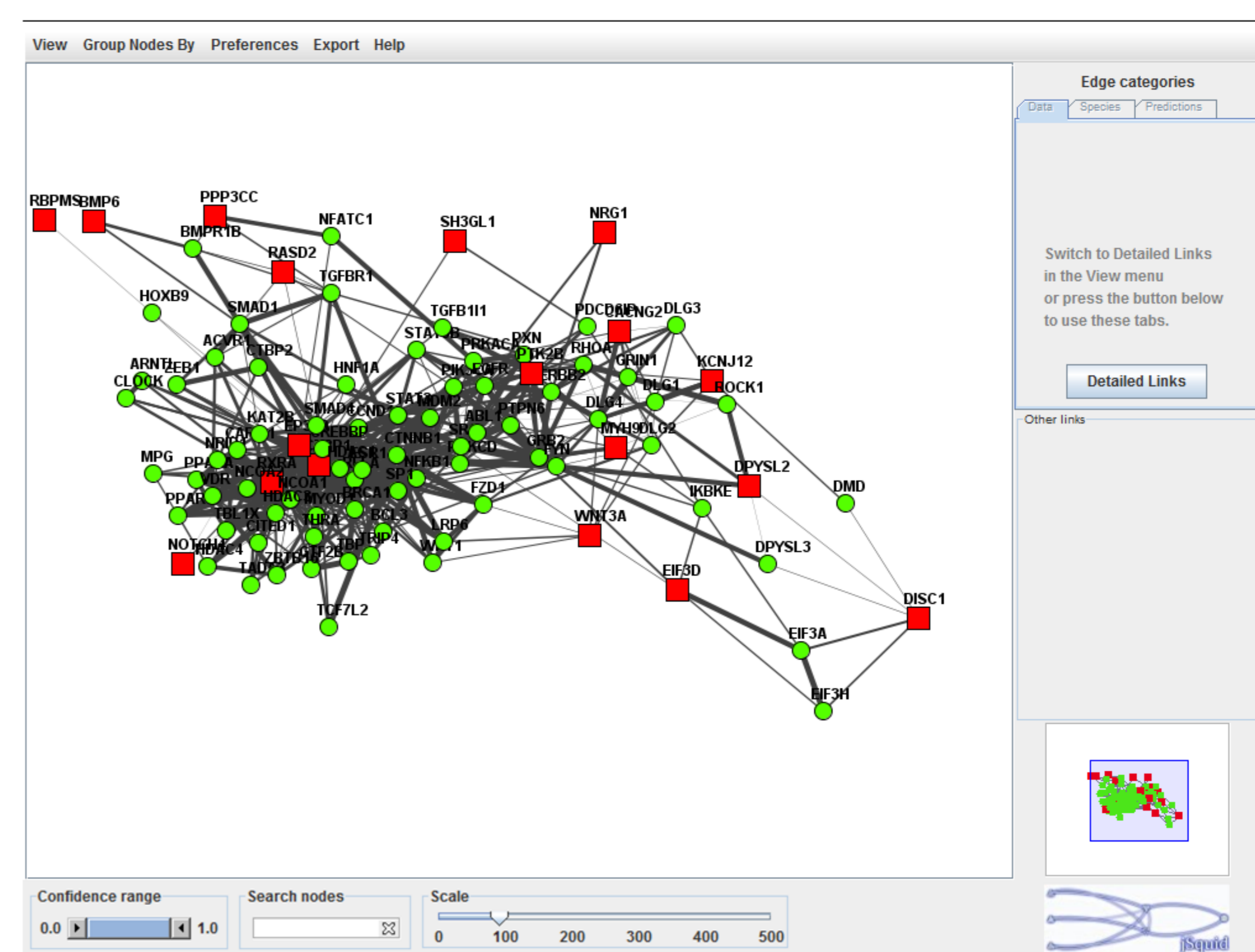
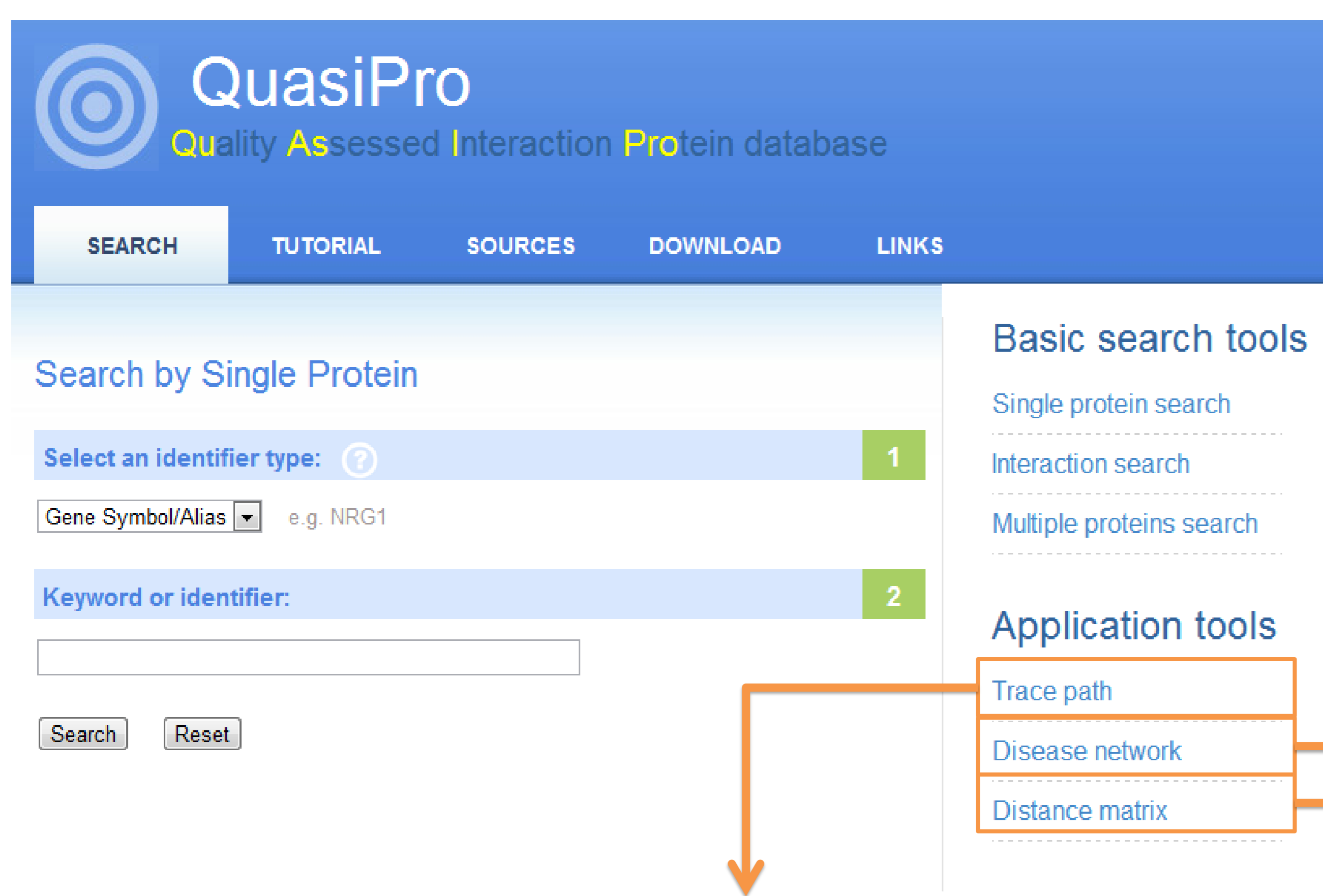
Schematic of the QuasiPro platform



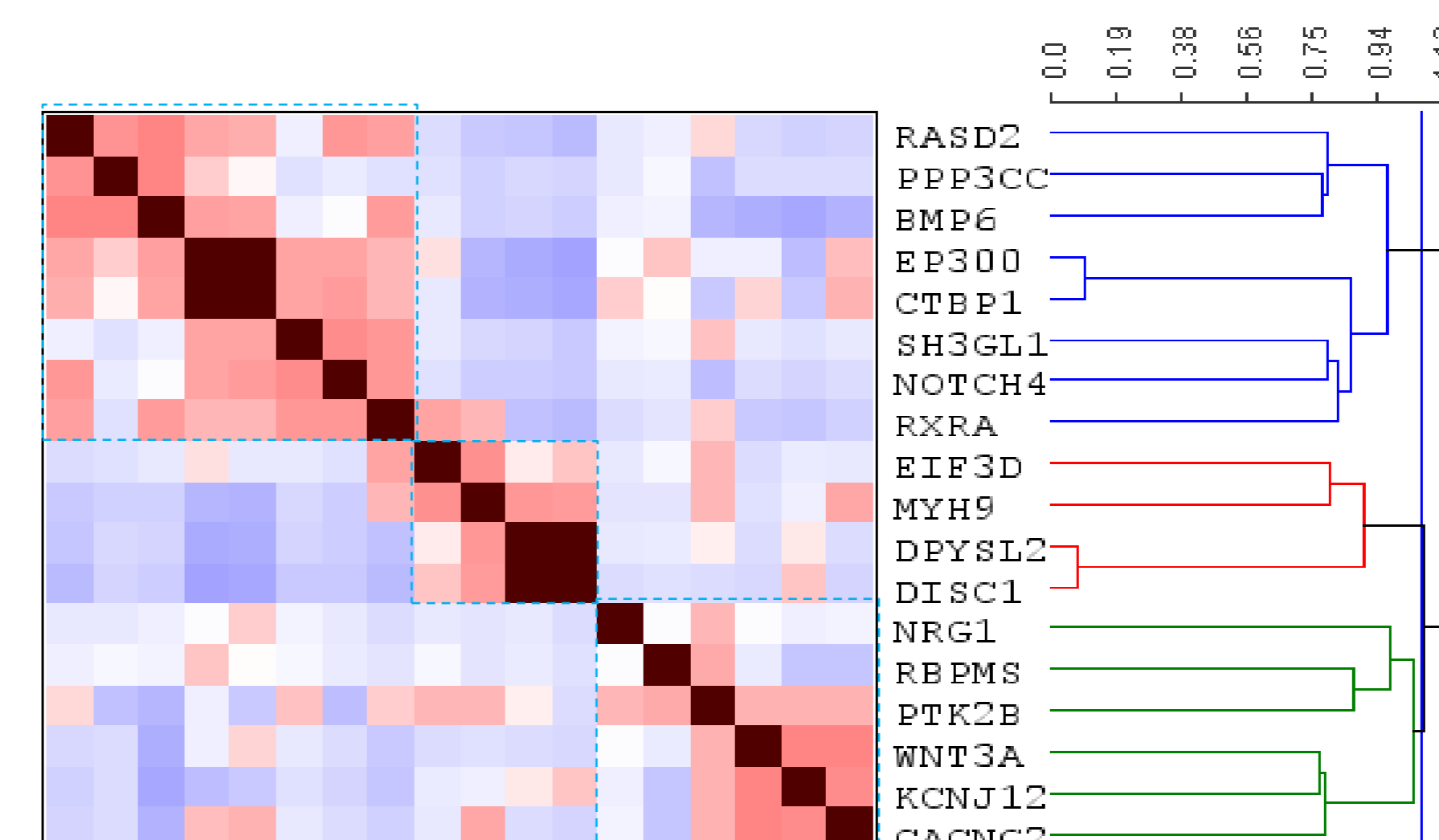
Combination of multiple parameters into one confidence score



QuasiPro provides several useful tools for analyzing the PPI network



Construction of disease-specific protein interaction network



Generating distance matrix for network clustering analysis

Tracing the all interacting paths between two proteins